

GANTT CHART MAKER EXCEL TEMPLATE v1

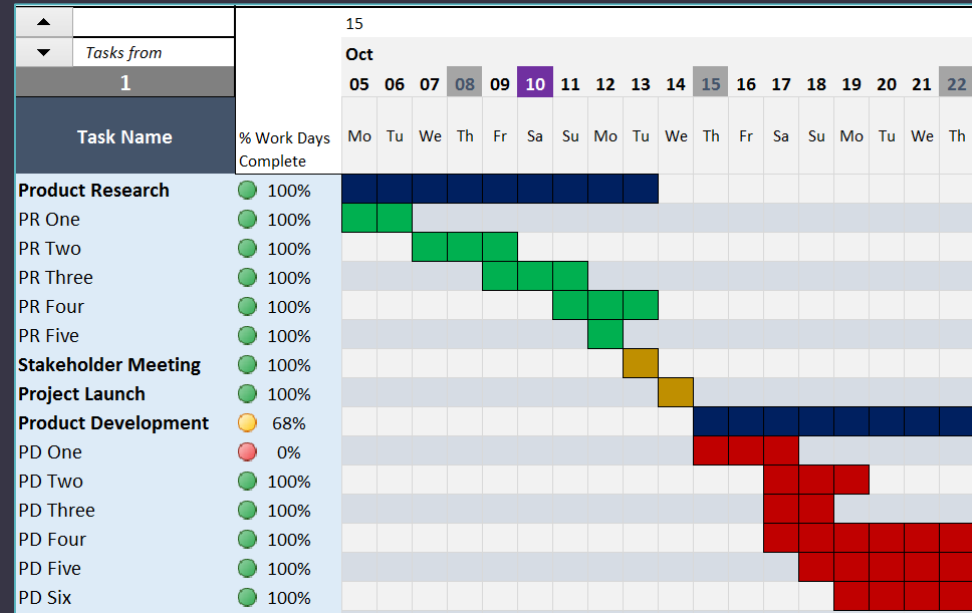
PURPOSE

Gantt chart is the most common method used to visualize project schedule. The Gantt Chart Maker Excel template allows one to easily create Gantt charts instantly.

- Instant Gantt charts saves time
- Flexibility to filter tasks
- Color them to fit your needs
- All within Excel and easy to extend
- Very easy to learn and use

REQUIREMENTS

- Microsoft Excel for Windows (2010, 2013, 2016)



MORE DETAILS

indzara.com/product/gantt-chart-maker-excel-template/

SITE: indzara.com

GANTT CHART MAKER EXCEL TEMPLATE V1

CONTROL PANEL

LEGEND

SCROLL TO MOVE DAYS

SCROLL TO SEE MORE TASKS

WBS Tasks

PROJECT NOTES

WEEKEND

HOLIDAY

TODAY

% COMPLETE

Task Name	% Work Days Complete	Start Date	End Date
Product Research	100%	05-Oct	14-Oct
PR One	100%	05-Oct	06-Oct
PR Two	100%	07-Oct	08-Oct
PR Three	100%	08-Oct	09-Oct
PR Four	100%	09-Oct	10-Oct
PR Five	100%	10-Oct	11-Oct
Stakeholder Meeting	100%	11-Oct	12-Oct
Project Launch	100%	12-Oct	13-Oct
Product Development	68%	14-Oct	25-Nov
PD One	0%	14-Oct	15-Oct
PD Two	100%	15-Oct	16-Oct
PD Three	100%	16-Oct	17-Oct
PD Four	100%	17-Oct	18-Oct
PD Five	100%	18-Oct	19-Oct
PD Six	100%	19-Oct	20-Oct
Product Testing	100%	21-Oct	25-Nov
PT One	100%	21-Oct	22-Oct
PT Two	100%	22-Oct	23-Oct
PT Three	100%	23-Oct	24-Oct
PT Four	100%	24-Oct	25-Oct
PT Five	100%	25-Oct	26-Oct
PT Six	100%	26-Oct	27-Oct
Product Marketing	33%	28-Oct	05-Nov
PM One	80%	28-Oct	29-Oct
PM Two	0%	29-Oct	30-Oct
PM Three	0%	30-Oct	31-Oct
PM Four	0%	31-Oct	01-Nov

FEATURES:

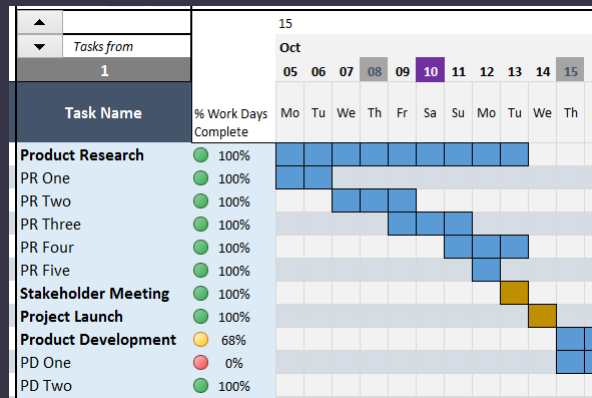
- ✓ Applicable to projects of any size (that span across days, weeks, months or years)
- ✓ Create two levels of Tasks (WBS - Summary tasks and subtasks)
 - Summary Tasks' dates are automatically calculated based on subtasks
- ✓ Multiple views (Plan, Actual, Actual vs Plan or Current Status)
- ✓ Simple and easy data entry
 - Automatic End Date calculation
 - Exclude Holidays & Weekends as non-working days
 - Enter Actual dates only where there is variance
- ✓ Option to use automatically calculated % of Work Days complete or user input
- ✓ Control which tasks are displayed
 - Filter to select tasks easily
 - Show only summary level tasks or Milestones
 - Show tasks of one resource
 - Incomplete tasks, and delayed tasks are automatically identified
- ✓ Visualization
 - Assign each task a color. Assign each resource a color.
 - 10 colors available (4 of them are theme based)
 - Milestone markers are automatically created
- ✓ Output
 - Ready to print. Or export as PDF and share
- ✓ Extension possibilities
 - 52 periods (days/weeks/months/years) are shown at a time. Can be extended.
 - View 40 tasks at a time by default. Can be extended.

CHOOSE TO VIEW GANTT CHART FOR 52 DAYS/WEEKS /MONTHS/YEARS

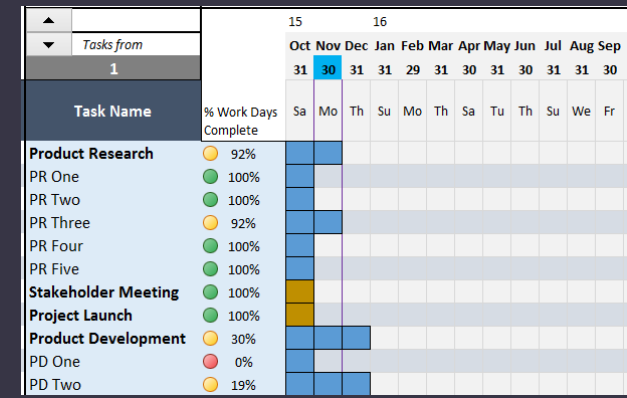
Choose to view Gantt Chart for 52 days/weeks /months/years.

PERIOD	Daily
	Daily
	Weekly
	Monthly
	Yearly

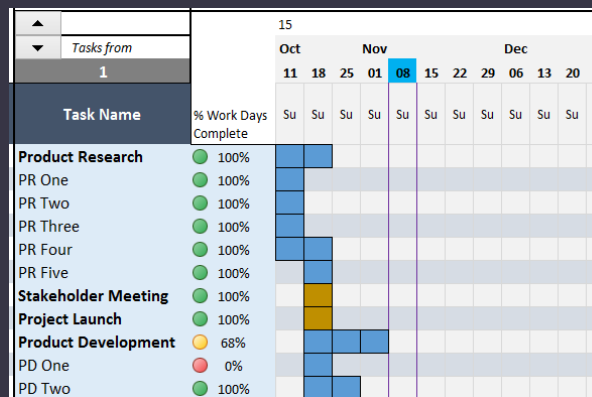
PERIOD Daily



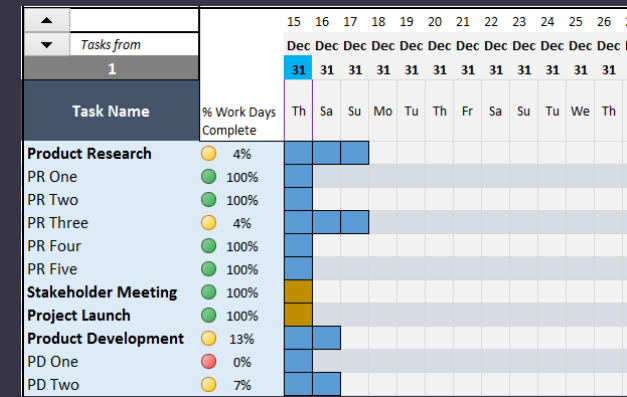
PERIOD Monthly



PERIOD Weekly

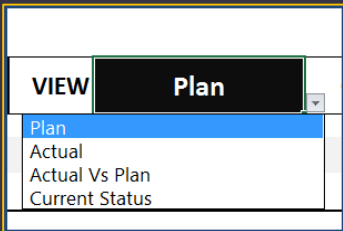


PERIOD Yearly

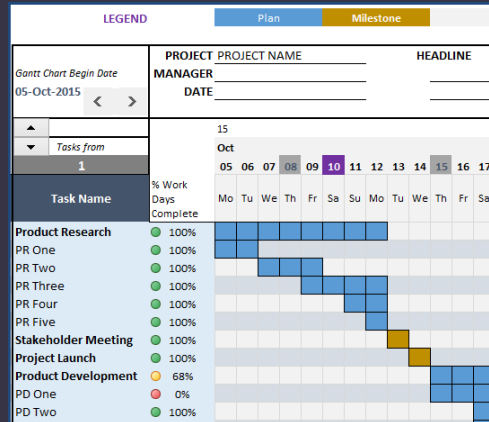


CHOOSE TO VIEW PLAN / ACTUAL / ACTUAL VS PLAN / CURRENT STATUS

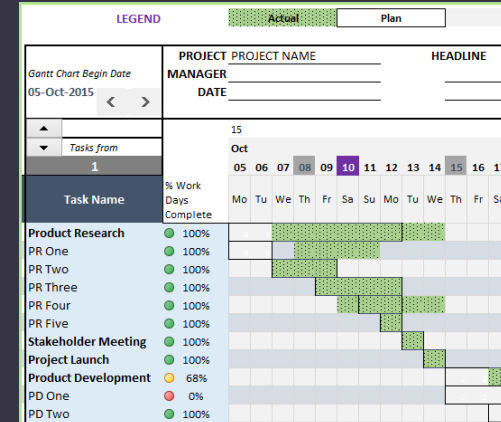
Four different views



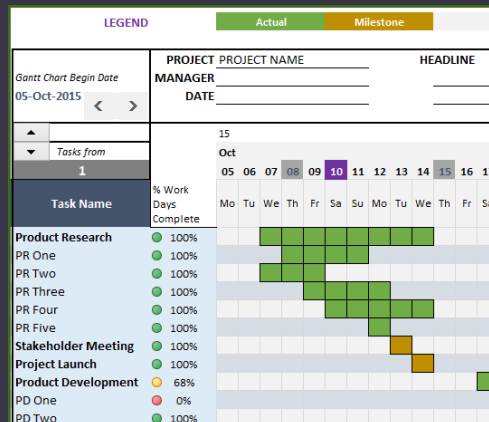
PLAN



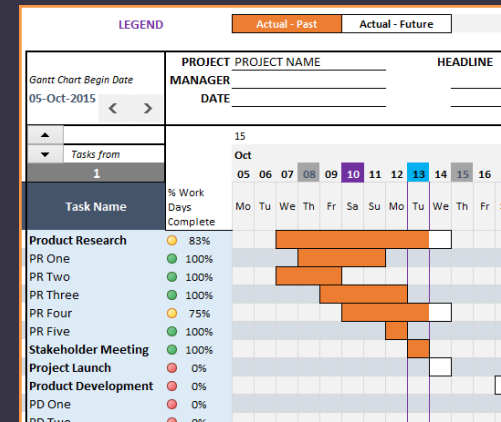
ACTUAL VS PLAN



ACTUAL



CURRENT STATUS



MORE OPTIONS

FILTER TASKS

CONTROL PANEL

FILTER TYPE All Tasks

LEGEND

- All Tasks
- Summary Level
- Milestones
- Delayed Tasks
- Incomplete Tasks
- Select Resource

PROJECT MANAGER

Chart Begin Date

FILTER TYPE Select Resource

RESOURCE NAME Developer One

Milestone

- Developer One
- Developer Two
- Researcher One
- Researcher Two
- Project Manager
- Tester One
- Tester Two
- Marketer One

PROJECT MANAGER

PROJECT PROJECT NAME

MANAGER

DATE

CHOOSE COLORS

COLORS Task Colors

Default Colors

Task Colors

Resource Colors

Enter resources and assign a color to each.

RESOURCE NAME	Color
Developer One	Yellow
Developer Two	Dark Blue
Researcher One	Green
Researcher Two	Red
Project Manager	Purple
Tester One	Orange
Tester Two	Black
Marketer One	White
Marketer Two	Gray
Sponsor	Blue

ACCOUNT FOR WEEKENDS/HOLIDAYS

Choose Weekend days

WEEKENDS

THU

- SAT & SUN
- SUN & MON
- MON & TUE
- TUE & WED
- WED & THU
- THU & FRI
- FRI & SAT
- SUN

Enter Holidays

HOLIDAYS

- 10-Oct-2015
- 25-Oct-2015

CONTROL PANEL

FILTER TYPE

All Tasks

VIEW

Plan

COLORS

Default Colors

PERIOD

Daily

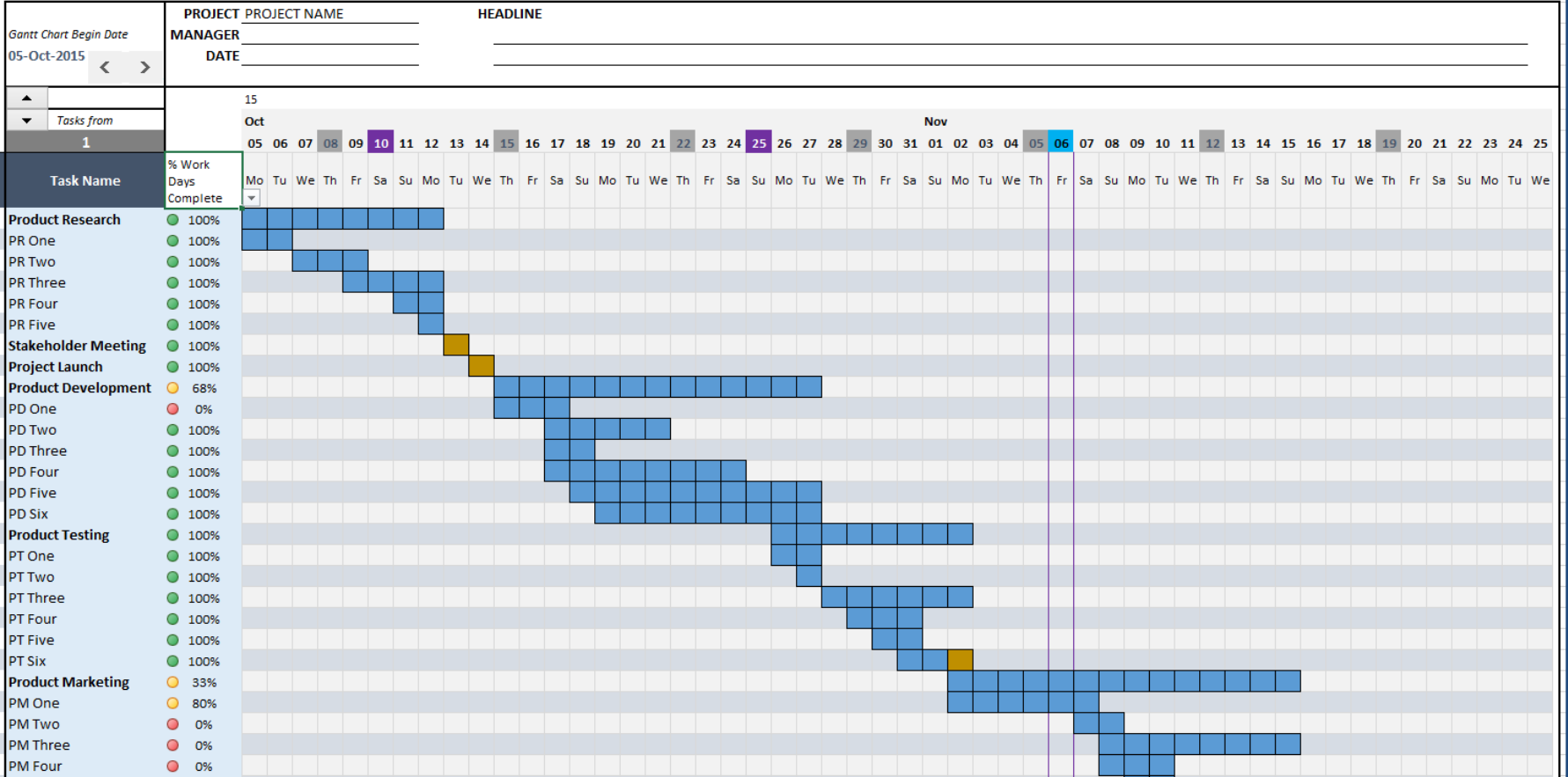
DATE

06-Nov-2015

LEGEND

Plan

Milestone



CONTROL PANEL

FILTER TYPE

All Tasks

VIEW

Plan

COLORS

Task Colors

PERIOD

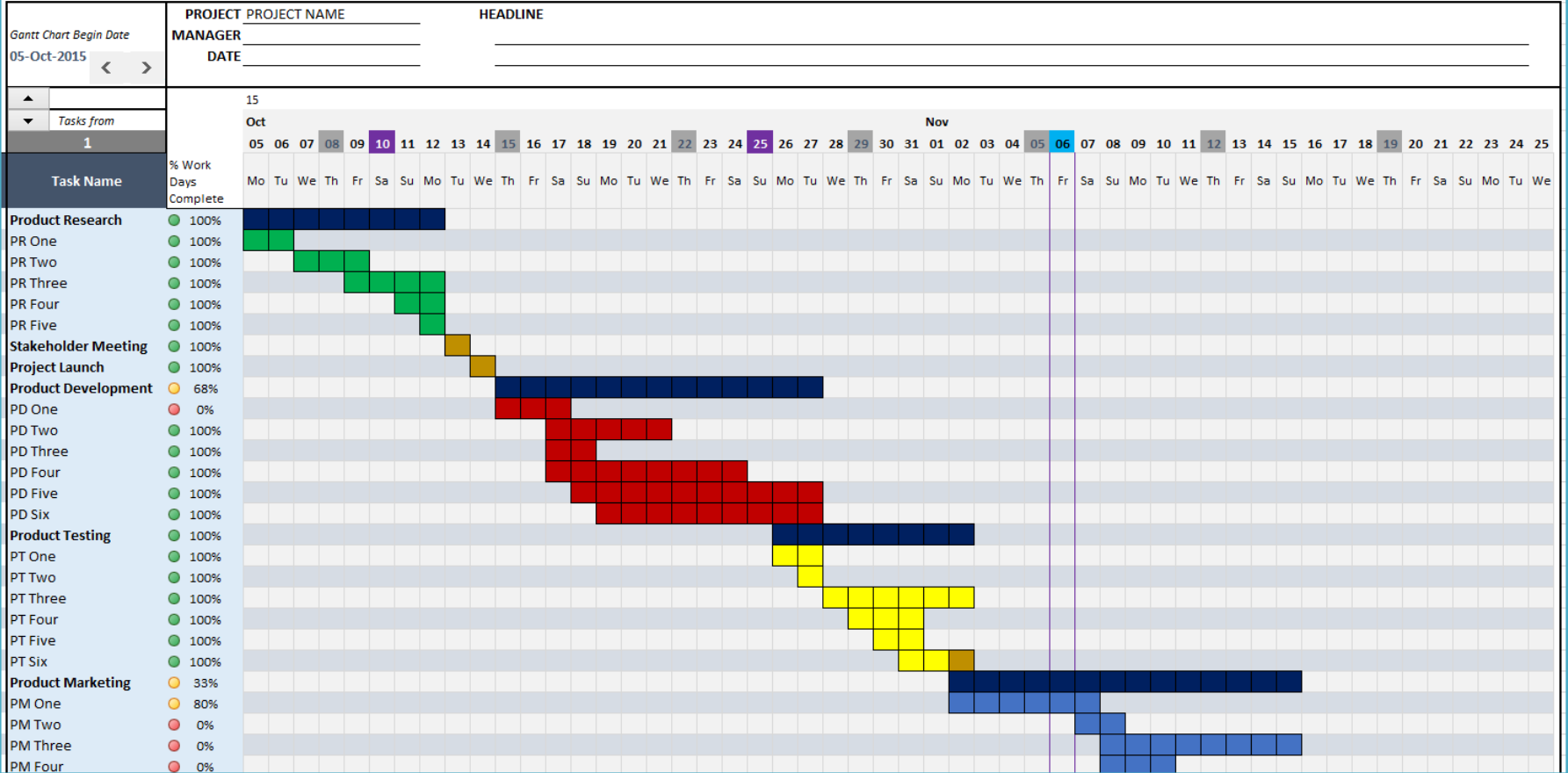
Daily

DATE

06-Nov-2015

LEGEND

Milestone



LIMITATIONS

- Duration is specified in days (not hours or minutes)
- Predecessors are not automatically handled. User will input start dates.
- Resource availability is not considered. Feature available in [Project Planner \(Advanced\)](#)

MORE DETAILS

Product Page:

indzara.com/product/gantt-chart-maker-excel-template/

Site:

indzara.com

Email:

indzara@gmail.com